

**2005 Scholastic Assessment Test (SAT) Report  
Souhegan High School  
Scott Prescott, Principal**

**Introduction**

In this report, I am pleased to update the community on the SAT scores including the class of 2005. We have done a great deal to provide opportunities for students to improve their performance on the SAT. There are many other factors that affect the performance of individual classes.

**Souhegan High School SAT results for the class of 2005 show a small decrease in verbal math scores but a jump in the participation rate.**

The following chart shows a comparison of the scores from the last five years:

	Verbal	Math	Overall	Participation Rate
Class of 2005	542	538	1080	96%
Class of 2004	551	546	1097	92%
Class of 2003	546	559	1105	90%
Class of 2002	537	534	1071	89%
Class of 2001	531	534	1065	89%
<b>Changes from class of 2001 to 2005</b>	<b>+11</b>	<b>+4</b>	<b>+15</b>	<b>+8%</b>

**Class of 2005 participation rate remains very high.**

Ninety-six percent of the class of 2005 took the SAT. This is four percentage points higher than the class of 2004. Compare Souhegan's participation rate to the national and statewide figures:

**Class of 2005 Participation**

National participation rate	<b>49%</b>
New Hampshire participation rate (all schools)	<b>81%</b>
<b>Souhegan High School participation rate</b>	<b>96%</b>

Historically, we have seen an increase in the number of students who are taking the SATs. This past year Souhegan's participation rate reached an all time high.

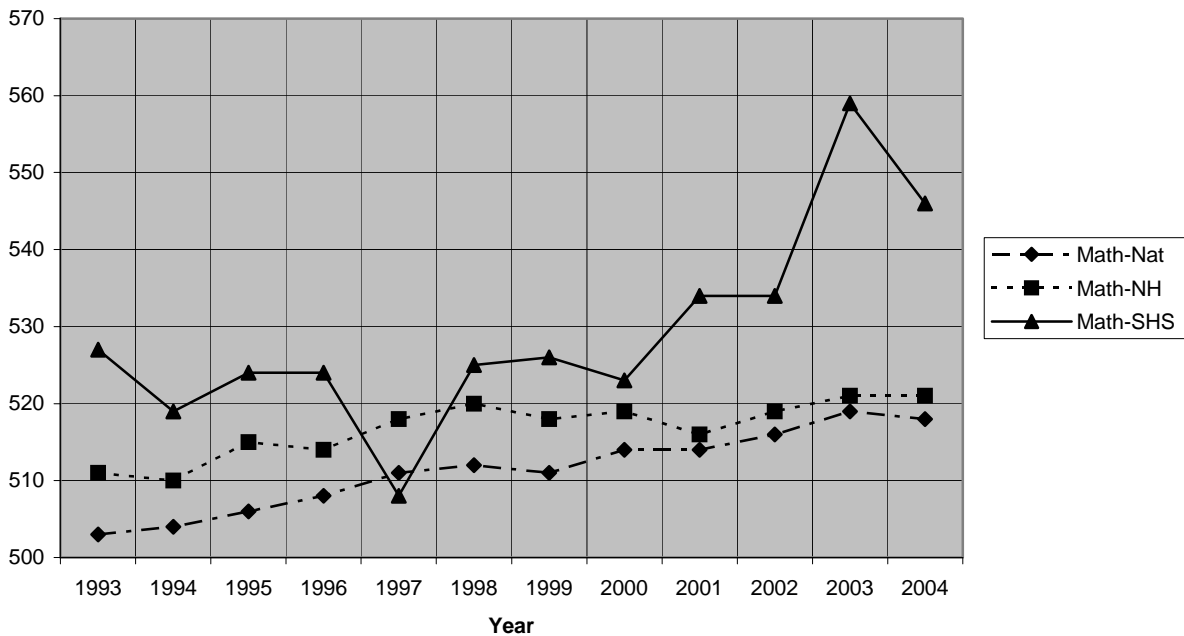
**Participation Percentages 1993-2005**

1993-SHS	86%
1994-SHS	83%
1995-SHS	91%
1996-SHS	89%
1997-SHS	89%
1998-SHS	87%
1999-SHS	92%
2000-SHS	89%
2001-SHS	89%
2002-SHS	89%
2003-SHS	90%
2004-SHS	92%
2005-SHS	96%

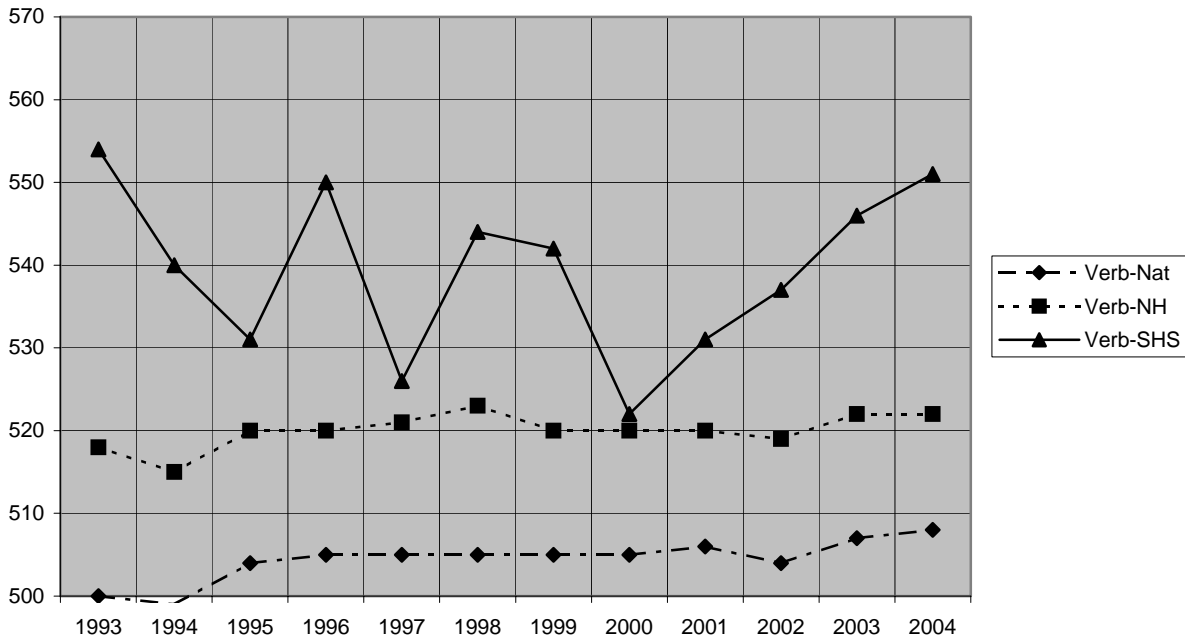
**Souhegan SAT scores stay relatively stable as participation rates increase.**

The following graphs illustrate the historical trends at Souhegan, in New Hampshire and nationally in both the verbal and math tests.

**Math SAT Scores**



Verbal SAT Scores



**Souhegan’s participation rate is much higher than the state and national rates, yet Souhegan SAT scores are still higher than state and national averages.**

Class of 2005	National	NH-all schools	<b>Souhegan</b>
Verbal mean	508	525	<b>542</b>
Math mean	520	525	<b>538</b>
Total mean	1028	1050	<b>1080</b>
Participation rate	49%	81%	<b>96%</b>

**Scott – I did not change any information in this paragraph.**

### Summary

As a school, we recognize the importance of many factors in providing our students with options after graduation. The SAT is one very important factor. We want to continue to see improvements in our SAT scores while at the same time increase the number of students who choose to take the test. This is an ambitious goal that will provide more students with the opportunity to consider post-secondary education as well as improve the options for all students. It runs counter to the conventional wisdom to both raise scores and improve participation, but it is important that we continue to improve by setting high goals.

What of the efforts that we have made to improve scores? In the past five years, we have done the following in an effort to improve test scores:

- Faculty analysis of SAT scores
- Math department focus on areas identified as weaker by alumni surveys and test results
- English department focus on a clear articulation of curriculum including vocabulary, grammar, and analogies
- Kaplan Test Preparation Program offered at Souhegan
- SATs continue to be administered at Souhegan High School

Although I have provided much information in this report about the SAT scores, there is more information available at the College Board website ([www.collegeboard.org](http://www.collegeboard.org)).